



## **Sinfonia CHC-S1245 & CHC-S2145 Software Installation and Users Guide**

Version 5

Provided by:

Kanematsu USA, Inc.  
100 Randolph Road  
Somerset, NJ 08873



**For Technical support contact (800) 597-4351**

# Sinfonia CHC-S1245 & CHC-S2145 Software Installation and Users Guide

Provided by: Kanematsu USA, Inc.  
100 Randolph Road  
Somerset, NJ 08873  
(800) 597-4351

Thank you for purchasing a Sinfonia Printer!  
This guide will explain how to install and use the enclosed Windows Driver and help you optimize your photo printing.

This guide is not designed to replace the Operation Manual included with the printer or available on the [www.kgdigital.com](http://www.kgdigital.com) website support page. You must register to open the support page. For more information on the printer and its features and settings, please refer to the Operation Manual included with your printer. It is important that you read the Operation Manual to ensure that you use this printer safely.

In order for KGDigital to properly support your product, we ask that you complete the Warranty Registration Card included with your printer or visit our website: [www.kgdigital.com](http://www.kgdigital.com) and register online.

## Step 1: Unpack and Setup Printer

Unpack printer and load paper and ribbon as shown in the Operation Manual.

Turn on and Plug printer into computer with a USB Cable (not included). Plug into a High Speed USB2 port for maximum performance. Standard USB1.1 can be used with much slower data transfer times. If Windows finds printer and prompted you to install and search for the driver click on **Cancel**. **Driver must be installed using the install program in step #2.**

## Step 2: Install Driver Software

**Double Click** on the Driver for the Sinfonia on the CD provided. If no CD was provided driver can be download from the [www.kgdigital.com](http://www.kgdigital.com) website support page. You must register to open the support page. A newer version of the printer driver may be available for download from the website.

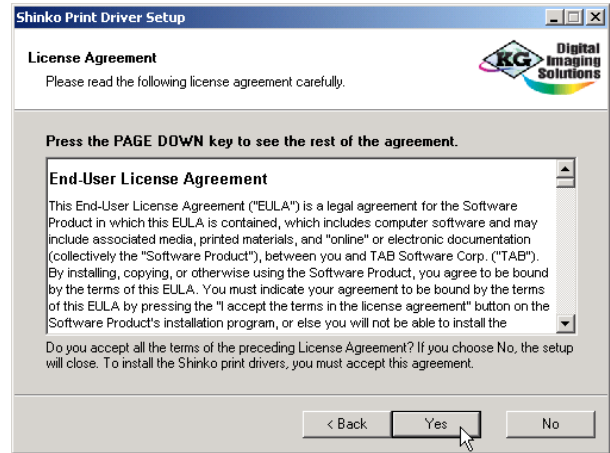


Click the **Setup** button to start the installation

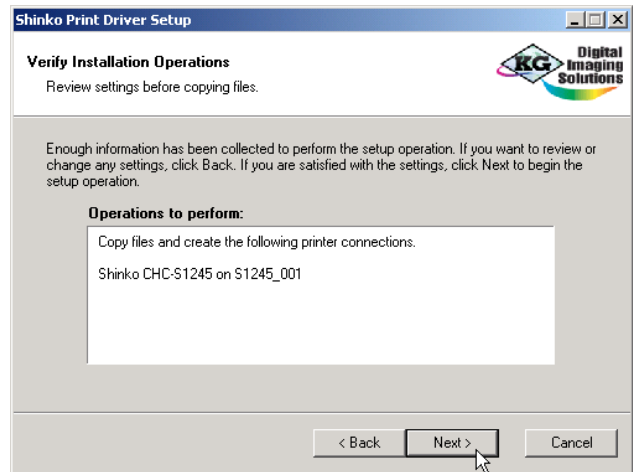
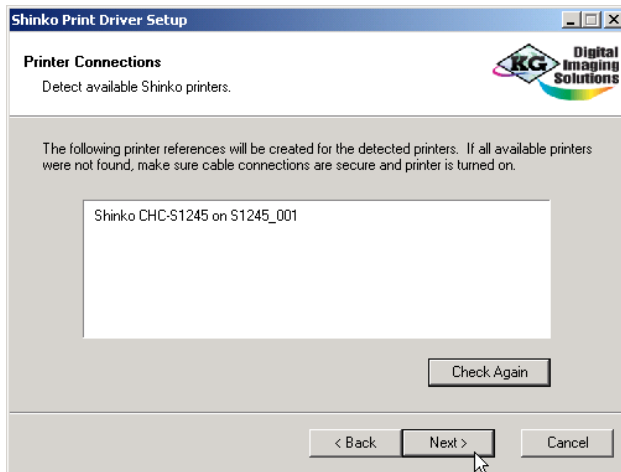


Click **Next** to Start the installation.

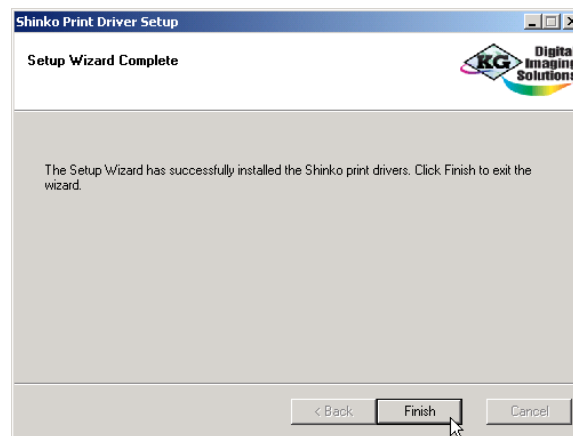
You must agree to the terms of the License Agreement by clicking **Yes** to continue.



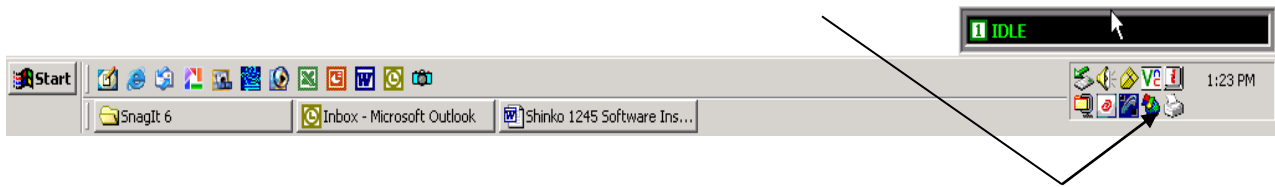
The printer should be automatically detected and will appear in the window. If it appears click **Next** to continue. If not detected check your connections and click **Check Again** then **Next** when it is found. Click **Next** verify installation when prompted.



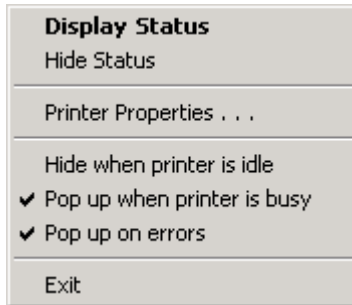
Installation will automatically load in necessary files. When completed click **Finish** to complete the installation and you will be ready to print.



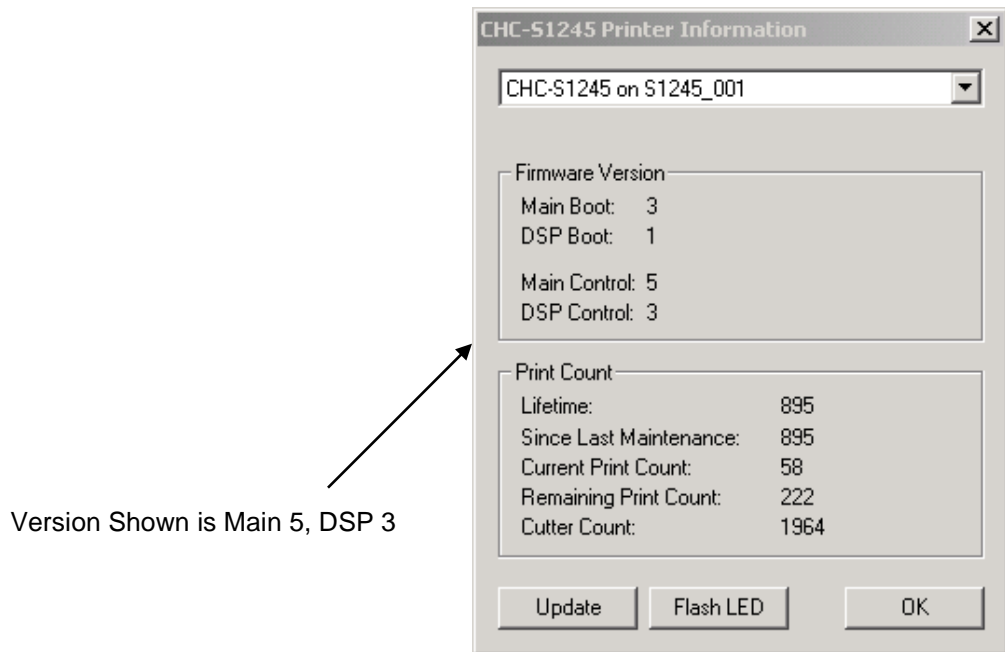
Upon installation, the Sinfonia printer Icon will be loaded onto your system tray. A status box will be displayed showing the status of the printer.



If you right click on the Sinfonia printer Icon in the system tray, you see the following options:



Clicking on **Printer Properties** will show you the Firmware Version and Print Count information.



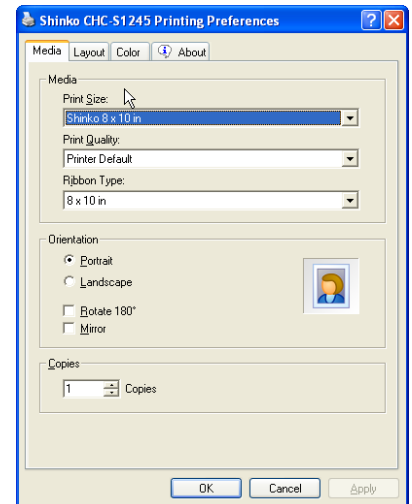
## Step 3-1: Printing

Using any Windows program you can print to the Sinfonia printers.

Select the Sinfonia Printer and then click on the Printer Setup button to change the printer settings if needed.

If you have a CHC-S1245 Continue to the next **Step 3-2**

If you have a CHC-S2145 Skip to **Step 3-3**



## Step 3-2: CHC-S1245 Print Size

In the Media Section select the print size by first selecting the ribbon type loaded. The Sinfonia CHC-S1245 Printer can use both 8x10 and 8x12 ribbon / media.

After selecting the ribbon size, select the print size. The print sizes displayed will be different depending on the ribbon size selected.

### Please note:

The printer uses 8" roll paper and ribbon with 8"x10" or 8"x12" color patches (Y,M,C,OC). Making a print less than an 8"x10" will only use part of the ribbon patch unless multiple images are printed at the same time.

8x10 Media print sizes:

- 1 – 8x10
- 1 – 6x8
- 2 – 5x8's
- 2 – 5x7's With Border
- 2 – 4x8's

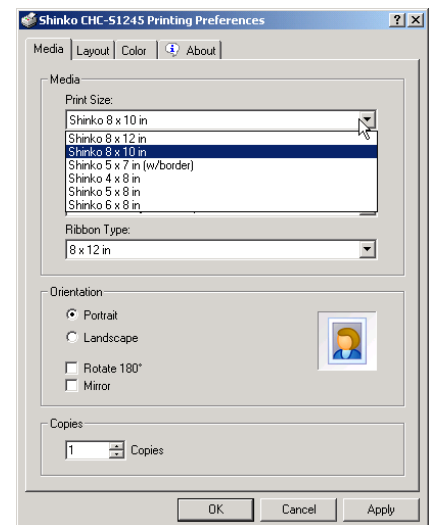
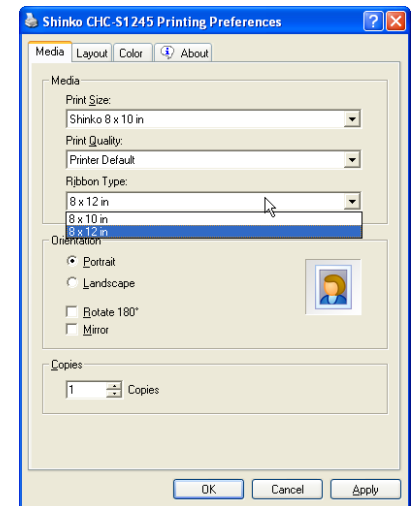
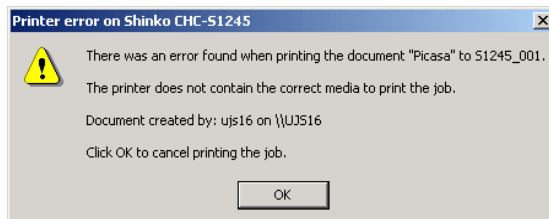
8x12 Media print sizes:

- 1 – 8x12
- 1 – 8x10
- 2 – 6x8's
- 2 – 5x8's
- 2 – 5x7's With Border
- 3 – 4x8's

The multiple images will be cut to the proper size automatically. Note that 5x7 prints will be printed on 8" wide paper and must be trimmed manually to size.

If you are sending only 1 image you can select 2 copies and 2 of the same image will be printed.

**\*Please note that if attempting to print an 8x12 using 8x10 media the following error message will be displayed. Change the ribbon to the proper size or select a different print size to print.**



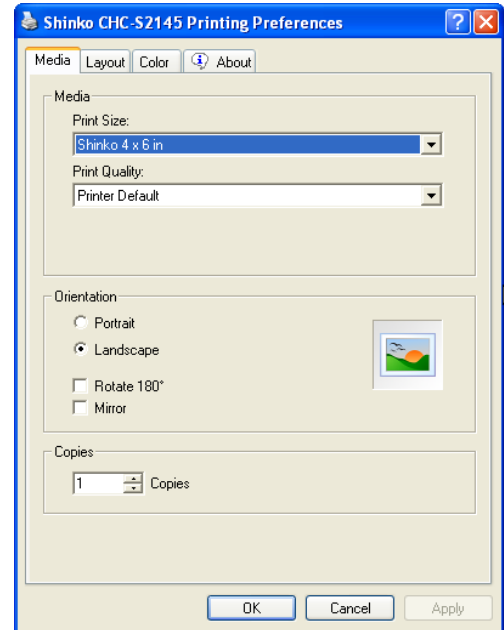
### Step 3-3: CHC-S2145 Print Size

In the **Media** Section you can select the print size and print quality.

#### Print Size:

- 4x6 – Using Sinfonia S2145 4x6 Media
- 5x7 – Using Sinfonia S2145 5x7 Media
- 6x8 – Using Sinfonia S2145 6x9 Media
- 6x9 – Using Sinfonia S2145 6x9 Media
- 2 - 6x4 – Using Sinfonia S2145 6x9 Media\* (Multi Cut)

\*If using 6x9 media to print 2-4x6's and you only send 1 image to print you will be using the equivalent of an entire 6x9 print.



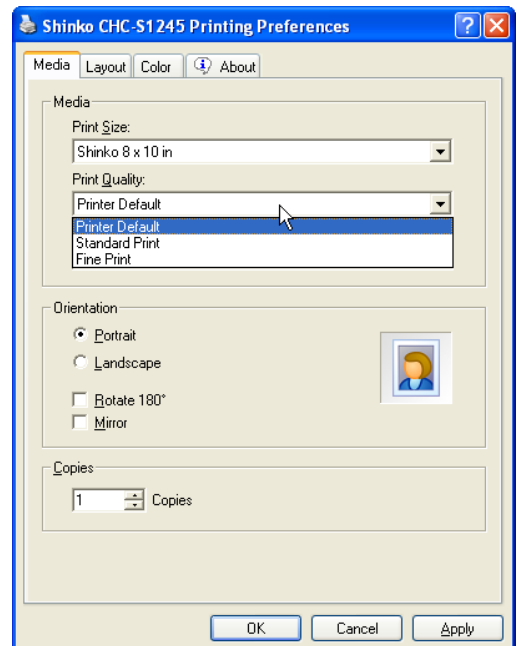
### Step 3-4: Print Quality

#### Print Quality:

You can select Standard Print Quality, Fine Print Quality or Printer Default mode.

Note: The Printer Default mode uses the setting on the printer, which is set manually\*. The printer will print whatever is selected in the driver even if the printer is manually set for a different mode.

\*Refer to printer operation manual to set the default setting of the printer.



## Step 3-5: Print Layout

Changing the **Scaling** will increase the amount of overspill or borders created.

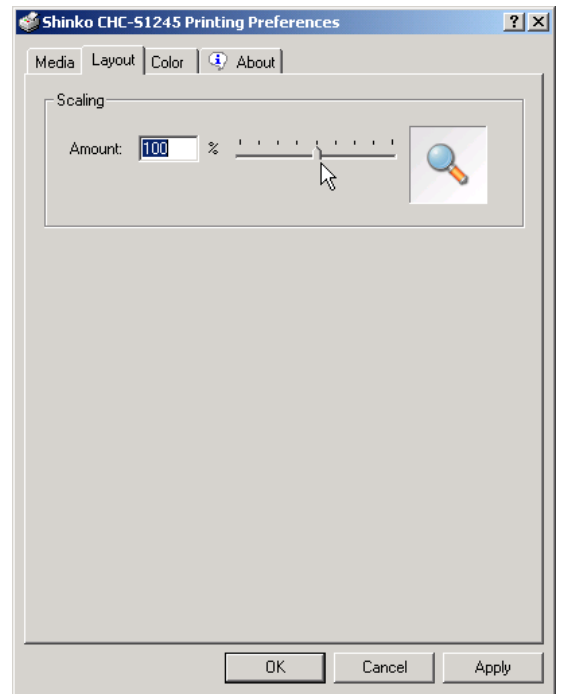
### Note:

Some software will send an exact print size resulting in a thin white edge on 1-2 sides of the print. This can be corrected by increasing the scaling to 101% or greater to create a print overspill.

Another method would be to send a slightly larger print to eliminate the white line.

Example: Send an 8.2" x 10.2" instead of an 8" x 10".

To create a white bordered print reduce the scaling to 90%-95%,



## Step 3-6: Print Color Adjustment

### Image Color Management

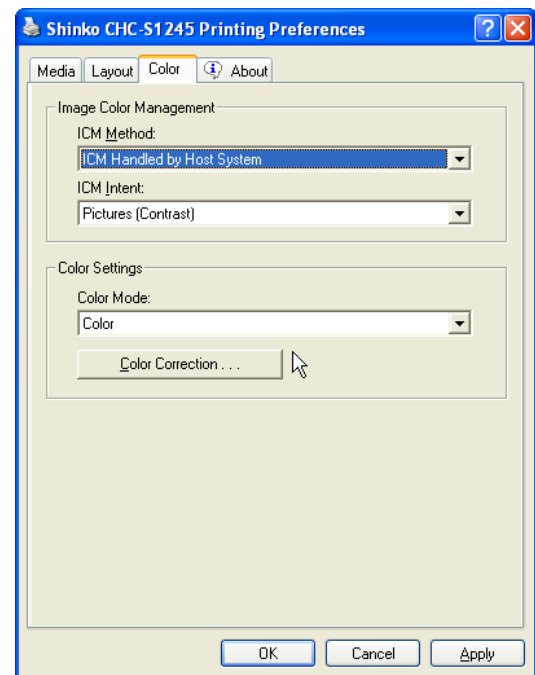
– See Advanced Step 5-3 & 5-4

### Color Settings

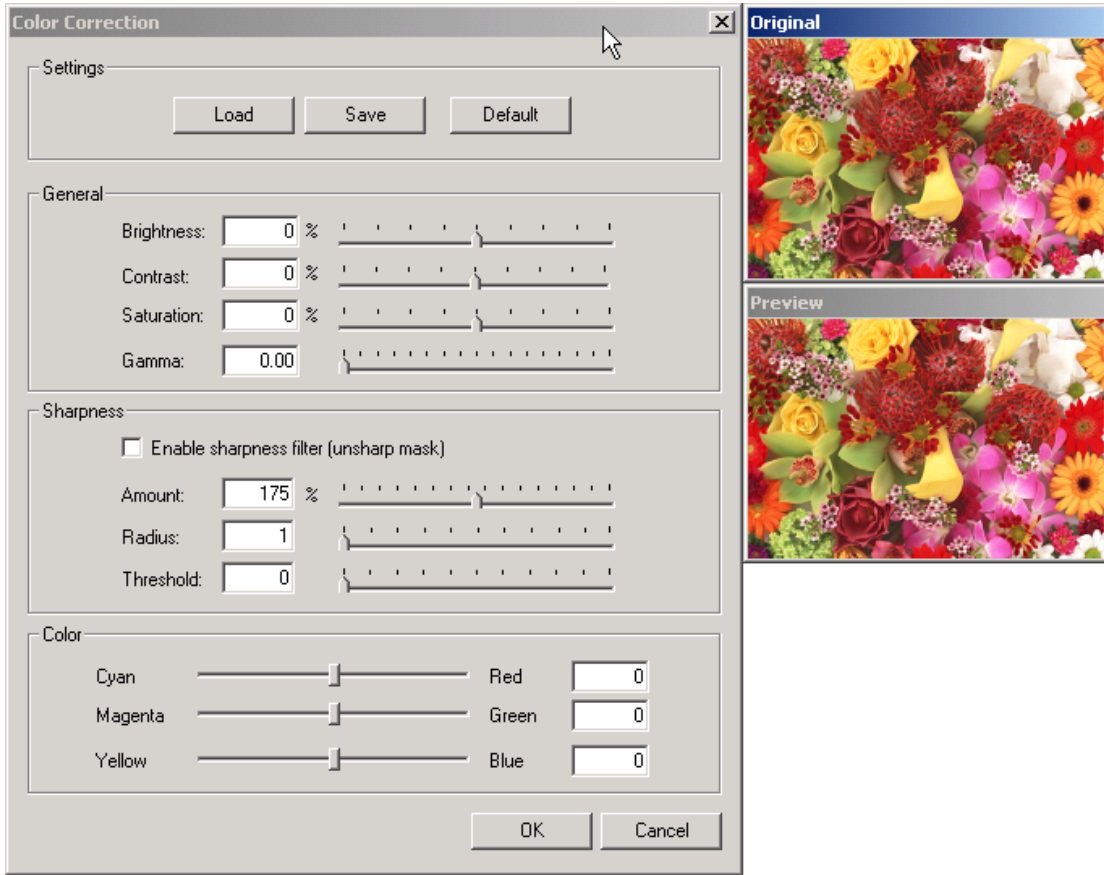
To print in **Color** or **Gray Scale** click on the Color Mode

### Color Correction

To adjust color click on the **Color Tab**, then click on the **Color Correction Settings** button.



The Color Correction window will open up showing the corrections you can make plus a photo with an original and preview view. The Preview view will change as you make your corrections.





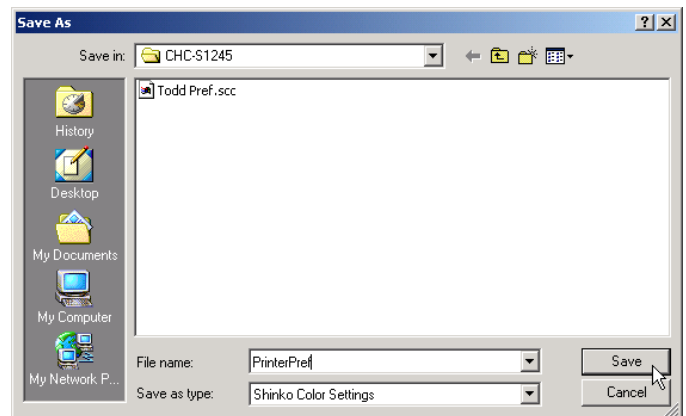
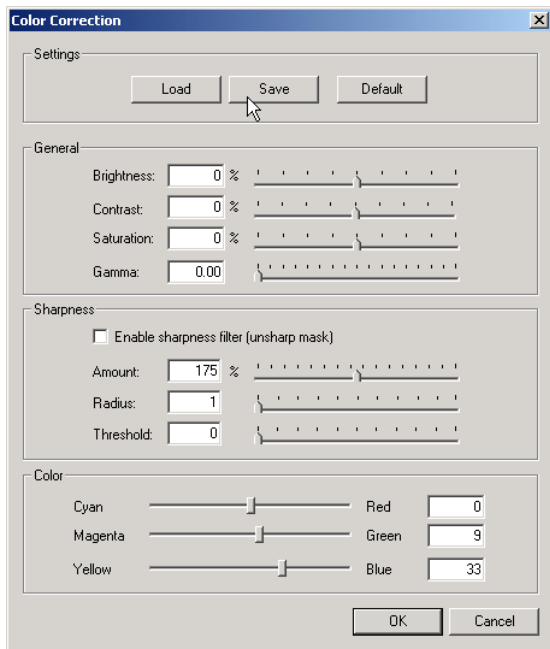
## Step 3-7: Saving Changes / Creating Profiles

Corrections can be saved to create custom profiles.

After making changes click **Save** to save the profile. Name the profile and select where to save it. An unlimited number of profiles can be saved.

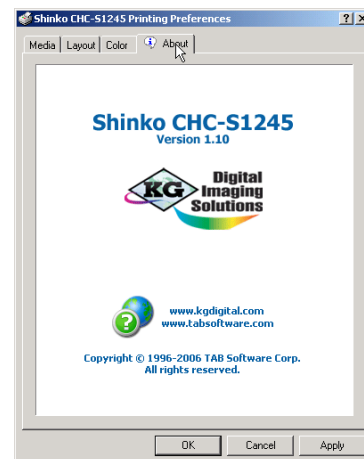
Clicking on **Default** will reset all changes.

To Select a profile previously saved click **Load** and select the previously saved profile.



## Step 4: Version Information

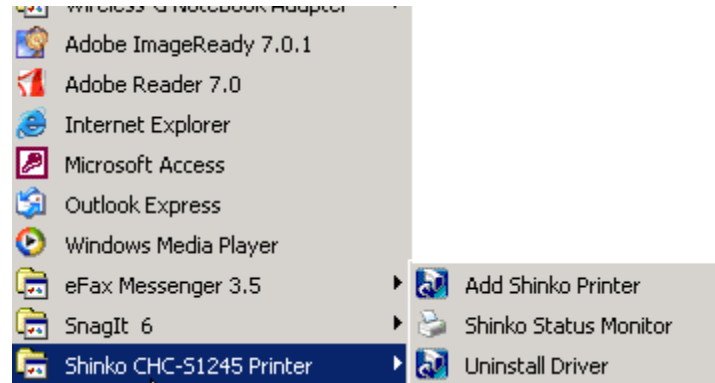
Click on the **About** tab to see the version of the driver installed.



## Step 5-1: Advanced Features – Adding Additional Printer

Installing more than one printer or adding a printer to the server.

Click on **Add Sinfonia Printer**. This will take you through the installation process and add a 2<sup>nd</sup> printer.



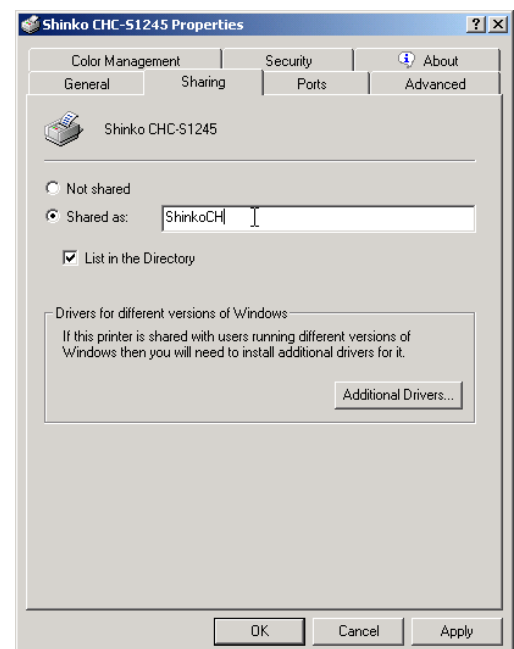
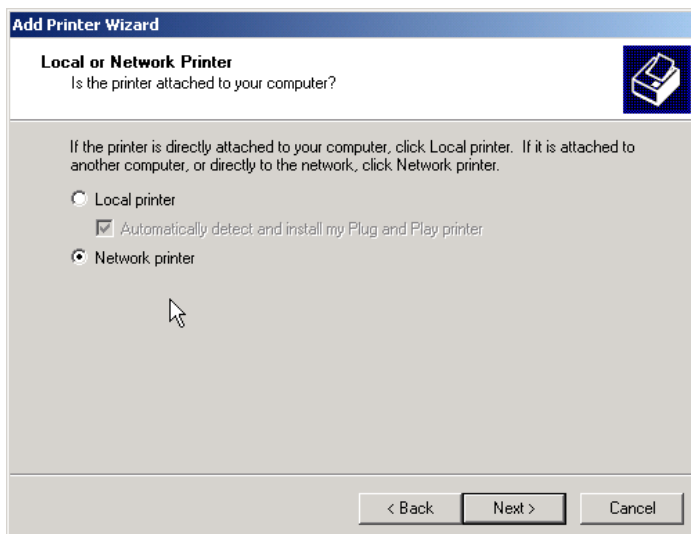
## Step 5-2: Advanced Features – Adding Printer to Network

Installing on a network

Printer must be shared on the host computer.

Enable Sharing in the Printer Properties on the host computer.

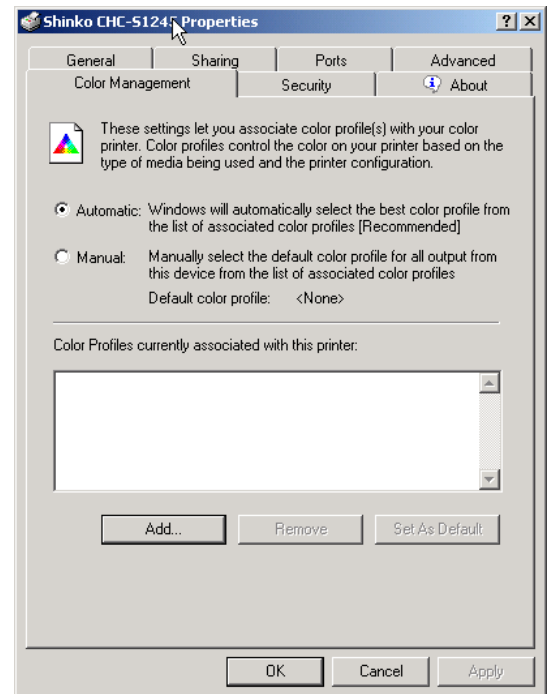
Click on Add Printer from the Printer folder and have Windows search for a Network Printer. When printer is found follow the Add Printer Wizard steps to finish the installation.



## Step 5-3: Advanced Features – Adding Color Profiles

In the computer printer folder right click on the Sinfonia printer and select printer Properties.

To load custom color profiles, click on **Color Management** tab then click on the **Add** button to load the profile.



## Step 5-4: Advanced Features – Image Color Management

'Image Color Management' (ICM) is the setting to control the use of the color profile selected on the 'Color Management' tab. A color profile must be created first.

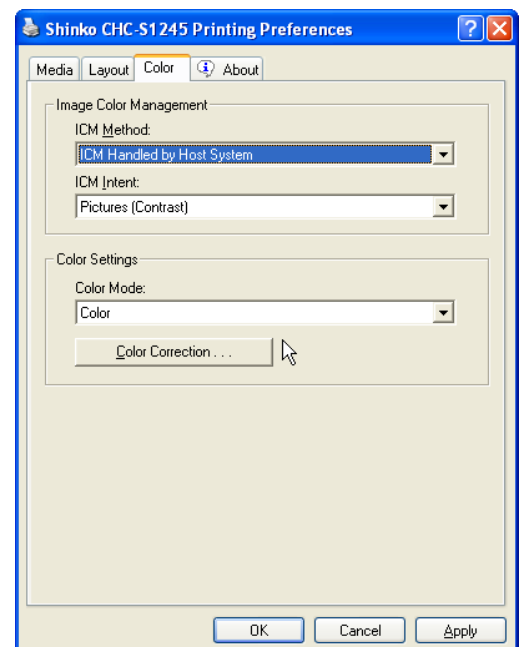
### ICM Method:

ICM Disabled The driver will disable the use of the selected color profile on the 'Color Management' tab.

ICM Handled by Printer The color management is handled by the Printer. This is recommended for profiles optimized for the printer. The driver will use of the color profile on the 'Color Management' tab.

ICM Handled by Host System The driver will enable color management using Microsoft Windows Color Profiles. The driver will use the color profile on the 'Color Management' tab.

**Note:** You should set the ICM Method to ICM Disabled if you are printing from software that performs its own color management, for example Photo Shop. Incorrect coloring will occur if both software and printer driver perform color management.



## ICM (Rendering) Intent

The International Color Consortium (ICC) has defined four different values called *rendering intents*. These represent four different approaches to creating a color rendering. These four intents, and the constants used to refer to them in code are as follows.

| Intent  | ICC Name              | Description                  |
|---------|-----------------------|------------------------------|
| Picture | Perceptual            | INTENT_PERCEPTUAL            |
| Graphic | Saturation            | INTENT_SATURATION            |
| Proof   | Relative Colorimetric | INTENT_RELATIVE_COLORIMETRIC |
| Match   | Absolute Colorimetric | INTENT_ABSOLUTE_COLORIMETRIC |

The ICC Profile Format Specification Version 3.4, which describes these intents, can be downloaded from the following Internet address: <http://www.color.org>

### Picture Intent

This intent is most suitable for display of photographs and images, and is generally the default intent.

Called perceptual intent in the ICC specification clause 4.9, a Picture intent causes the full gamut of the image to be compressed or expanded to fill the gamut of the destination device, so that gray balance is preserved but colorimetric accuracy may not be preserved.

### Graphic Intent

This intent is most suitable for business graphics such as charts, where it is more important that the colors be vivid and contrast well with each other rather than a specific color.

The ICC specification clause 4.12 calls the Graphic intent a saturation intent. It preserves the saturation of colors in the image at the possible expense of hue and lightness.

### Proof Intent

Proof intent does not preserve the white point.

The white point of the image is moved to match the white point of the printer. All other colors in the image keep their position relative to the white point. This produces an image that more accurately reflects what the printed image will look like. However, the user may find it visually disconcerting.

### Match Intent

Match intent preserves the white point.

In a Match intent, any colors that fall outside the range that the output device can render are adjusted to the closest color that can be rendered, while all other colors are left unchanged. The ICC specification calls the match intent absolute colorimetric intent.